

## Weekly Measles Case Update, British Columbia - August 14, 2025

Immunization Programs and Vaccine Preventable Diseases Service, BCCDC

The [BCCDC measles webpage](#) is updated twice-weekly (Mon/Thurs) with information on measles cases reported in BC.

For updates on known measles exposure locations in BC and an exposure risk assessment tool, please visit the [Measles Exposures and Self-Assessment Tool](#).

**Data may change as case information is reported to and updated in Panorama. The information included in this report is as of Panorama at 7:00AM on August 14, 2025.**

Note: These case counts only capture a subset of actual cases as some people may not be presenting for diagnosis and health care support.

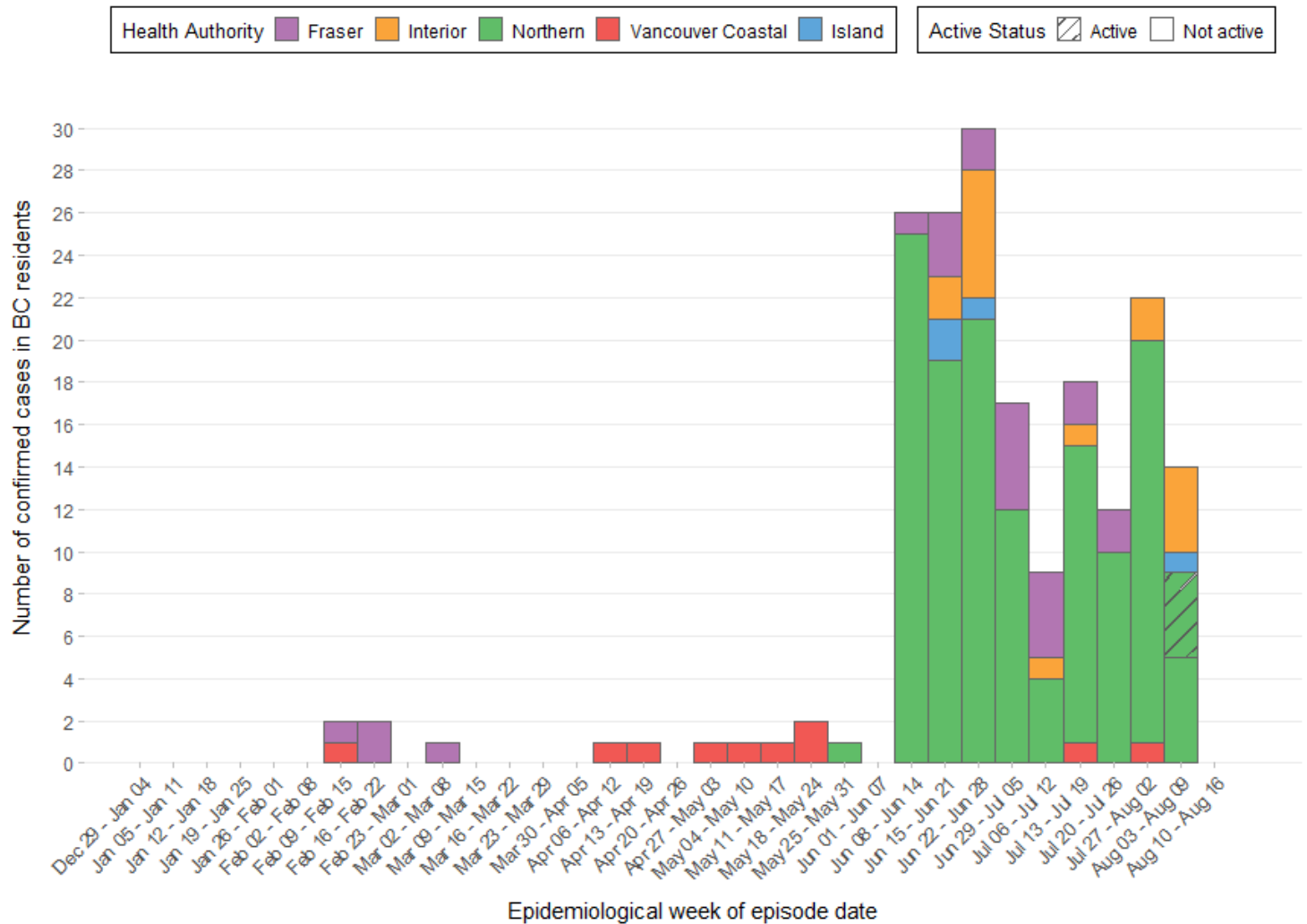
**Table 1.** Number of measles cases reported in BC in 2025, by regional health authority (RHA) and active status

| Health Authority  | Currently active*<br>cases<br>(% of Total cases) | Confirmed  | Probable  | Total cases |
|-------------------|--|------------|-----------|-------------|
| Fraser            | 0 (0%)   | 23         | 0         | 23          |
| Interior          | 0 (0%)   | 16         | 0         | 16          |
| Northern          | 4 (3%)   | 134        | 16        | 150         |
| Vancouver Coastal | 0 (0%)   | 10         | 0         | 10          |
| Island            | 0 (0%)   | 4          | 0         | 4           |
| <b>Total</b>      | <b>4 (2%)</b>                                    | <b>187</b> | <b>16</b> | <b>203</b>  |

Data were extracted on August 14, 2025, and include all confirmed measles cases (both lab-confirmed cases and cases epidemiologically linked to a lab-confirmed case) and probable measles cases (clinical illness without lab confirmation or epidemiological link to a lab-confirmed case, but with recent travel to an area of known measles activity) reported to Panorama on or before August 13, 2025. Full measles case definitions can be found on the [BCCDC website](#).

\*For reporting purposes, measles cases are considered to be active/communicable for 4 days after rash onset, or 10 days after symptom onset (if no rash present), or 10 days after case report if no information on symptoms available at the time of reporting.

**Figure 1.** Epidemiological curve of confirmed measles cases reported in BC in 2025, by RHA and active status

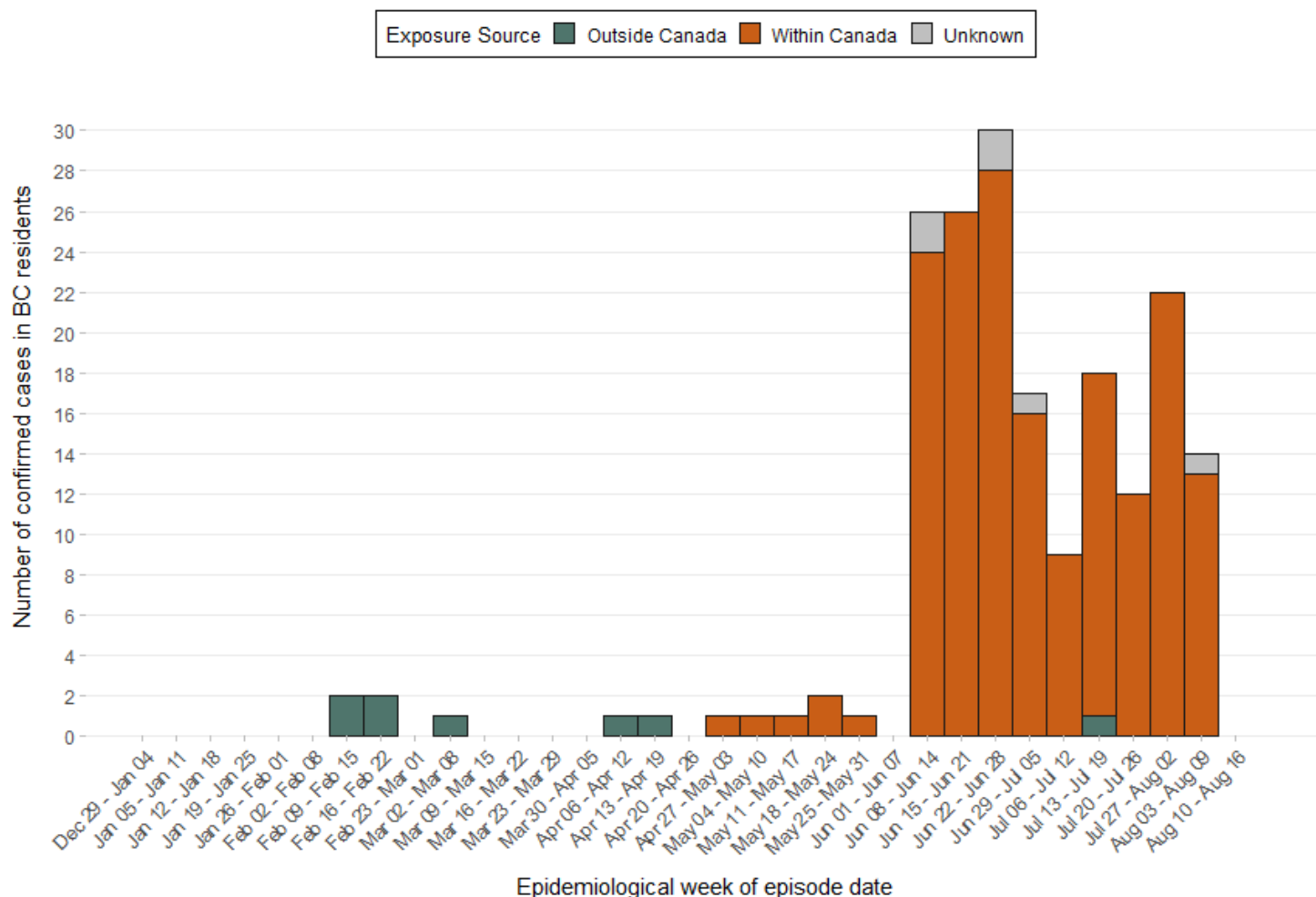


Total count = 187 cases reported in British Columbia in 2025.

For reporting purposes, measles cases are considered to be active/communicable for 4 days after rash onset, or 10 days after symptom onset (if no rash present), or 10 days after case report if no information on symptoms available at the time of reporting.

Data were extracted from Panorama on August 14, 2025, and include all confirmed measles cases (both lab-confirmed cases and cases epidemiologically linked to a lab-confirmed case) with an episode date from January 01, 2025, to August 13, 2025 (inclusive). Case numbers may change as cases are reported into Panorama and information is updated. An episode date is the earliest of symptom onset date, laboratory specimen collection or test result date, or date of death.

**Figure 2.** Epidemiological curve of confirmed measles cases reported in BC in 2025, by exposure source



Total count = 187 cases reported in British Columbia in 2025.

Data were extracted from Panorama on August 14, 2025, and include all confirmed measles cases (both lab-confirmed cases and cases epidemiologically linked to a lab-confirmed case) with an episode date from January 01, 2025, to August 13, 2025 (inclusive). Case numbers may change as cases are reported into Panorama and information is updated.

An episode date is the earliest of symptom onset date, laboratory specimen collection or test result date, or date of death.

**Exposure source:**

**Outside Canada** = International travel reported during exposure period and/or source of infection reported as 'Outside Canada'.

**Within Canada** = Travel during exposure period reported as 'No' and/or source of infection reported as 'In Canada'.

**Unknown** = No reported information on travel during exposure period or on source of infection.

**Table 2.** Confirmed measles cases reported in BC in 2025, by age group, exposure source, immunization status, and hospitalization status

|  | Category                       | Number (%) of confirmed measles cases |
|--|--------------------------------|---------------------------------------|
| <b>Age group (Years)</b>                                   | <1                             | 9 (5%)                                |
|  | 1 to 4                         | 31 (17%)                              |
|  | 5 to 17                        | 89 (48%)                              |
|  | 18 to 54                       | 57 (30%)                              |
|  | 55+                            | 1 (1%)                                |
| <b>Exposure source<sup>1</sup></b>                         | Outside Canada                 | 8 (4%)                                |
|  | Within Canada                  | 173 (93%)                             |
|  | Unknown                        | 6 (3%)                                |
| <b>Immunization status prior to case onset<sup>2</sup></b> | Received 2 or more valid doses | 5 (3%)                                |
|  | Received 1 valid dose          | 7 (4%)                                |
|  | Assumed immune because of age  | 1 (1%)                                |
|  | Unimmunized                    | 164 (88%)                             |
|  | Unknown                        | 10 (5%)                               |
| <b>Hospitalization at time of case report</b>              | Hospitalized                   | 13 (7%)                               |
|  | Not Hospitalized               | 171 (91%)                             |
|  | Unknown                        | 3 (2%)                                |
| <b>Total</b>   |                                | <b>187</b>                            |

Data were extracted on August 14, 2025, and include all confirmed measles cases (lab-confirmed cases and cases epidemiologically linked to a lab-confirmed case) reported to Panorama on or before August 13, 2025.

<sup>1</sup> Exposure source definitions:

**Outside Canada** = International travel reported during exposure period and/or source of infection reported as 'Outside Canada'.

**Within Canada** = Travel during exposure period reported as 'No' and/or source of infection reported as 'In Canada'.

**Unknown** = No reported information on travel during exposure period or on source of infection.

<sup>2</sup> Immunization status prior to case onset includes valid measles-containing vaccine doses (i.e., administered on or after 12 months of age and with a minimum interval of 28 days between subsequent doses) administered at least two weeks prior to symptom onset. At the reporting clinician's discretion, the reporting of measles immunization status prior to onset may include undocumented doses (e.g., verbal report). 'Assumed immune because of age' includes individuals born before 1970.

The vast majority of people with measles are unimmunized or have unknown immunization status. For people who are considered immunized and do acquire measles, their disease is usually significantly milder than in people who are unimmunized. For BC's routine immunization schedule, please see [here](#).

- To date, no measles-associated deaths have been reported in BC in 2025.